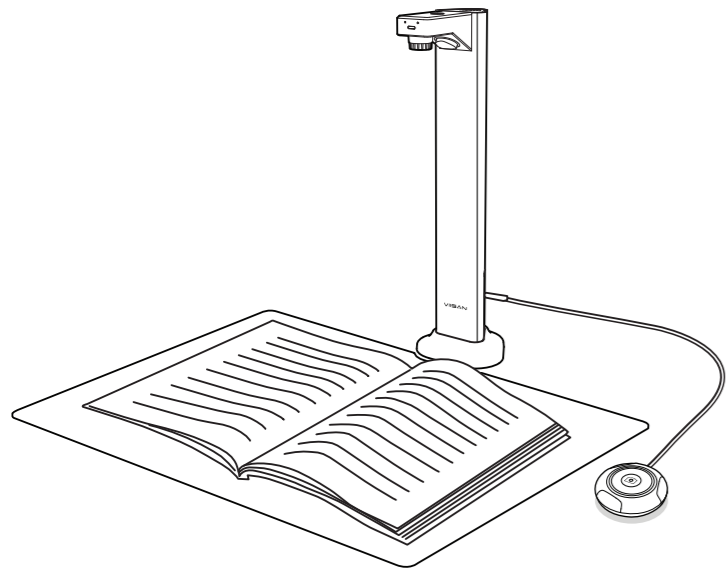


# VIISAN® Document Camera



## Quick Start Guide

Please read this guide before using the product.

### Step 1. Instructions

Thank you for choosing VIISAN. This product is a short-arm design document camera with high-brightness asymmetric full-coverage lighting technology. This quick start guide will walk you through the steps to get started with your new camera. If you have any questions or need technical support, please don't hesitate to contact our customer service team at [info@viisan.com](mailto:info@viisan.com). We're here to help!

#### Safety & Environmental Information

##### Federal Communications Commission Statement (Class B)

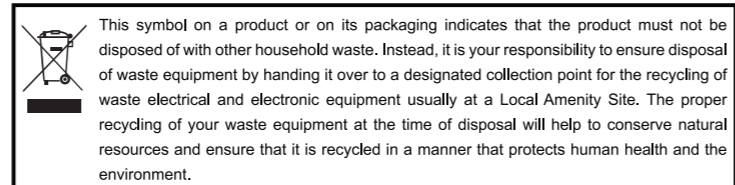
**FC** This device complies with Part 15 of the FCC Rules. Operation is subject to the following two conditions: (1) this device may not cause harmful interference, and (2) this device must accept any interference received, including interference that may cause undesired operation. This equipment has been tested and found to comply with the limits for a Class B digital device, pursuant to part 15 of the FCC Rules. These limits are designed to provide reasonable protection against harmful interference in a residential installation. This equipment generates, uses, and can radiate radio frequency energy and, if not installed and used in accordance with the instruction manual, may cause harmful interference to radio communications. However, there is no guarantee that interference will not occur in a particular installation. If this equipment does cause harmful interference to radio or television reception, which can be determined by turning the equipment off and on, the user is encouraged to try to correct the interference by one or more of the following measures:

- Reorient or relocate the receiving antenna.
- Increase the separation between the equipment and receiver.
- Connect the equipment into an outlet on a circuit different from that to which the receiver is connected.
- Consult the dealer or an experienced radio/TV technician for help.

Any changes or modifications not expressly approved by the party responsible for compliance could void the authority to operate the equipment.

##### CE Class B (EMC)

**CE** This product is herewith confirmed to comply with the requirements set out in the Council Directives on the Approximation of the laws of the Member States relating to Electromagnetic Compatibility Directive 2014/30/EU.



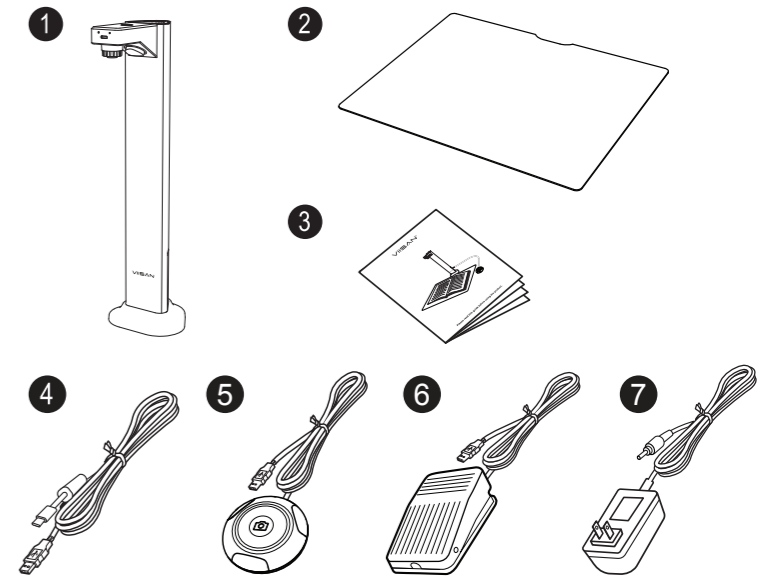
### Step 2. Specifications

Model	DL18	DL24
Max. Resolution	18MP (4912x3680 pixels)	24MP (5696x4272 pixels)
Max. Video Frame Rate	2048 x 1536@30fps 1920 x 1080@30fps (Full HD)	
Lens Focus	Fixed	
Max. Shooting Area	A3, 420 x 297 mm, 16.5 x 11.7 inch	
Color bit depth	24-bit	
Built-in LED	3-level control LED light (400 lux at central)	
LED Indicator Status	Power on: Green-light emitting Scanning: Green-light flashing Recording: Red-light flashing	
Video Compression	MJPEG, YUY2	
Output Format	Picture: JPG, TIFF, BMP, PNG Document: PDF(Image), PDF (Searchable), PDF (Text), Excel, WORD, TEXT, MP3 E-book: EPUB Video: AVI, MPEG, FLV, WMV	
Microphone	Built-in	
Interface	USB 2.0 Type-C x 1 (For PC Connection) USB 2.0 Type-A x 1 (For USB Extension)	
Power	DC-IN 5V/2A	
Dimension	118 (L) X 98 (W) X 370 (H) mm	
Net Weight	Approx. 1.2kg	
System Requirements	Windows 7/8/10/11 macOS 10.15 or later	

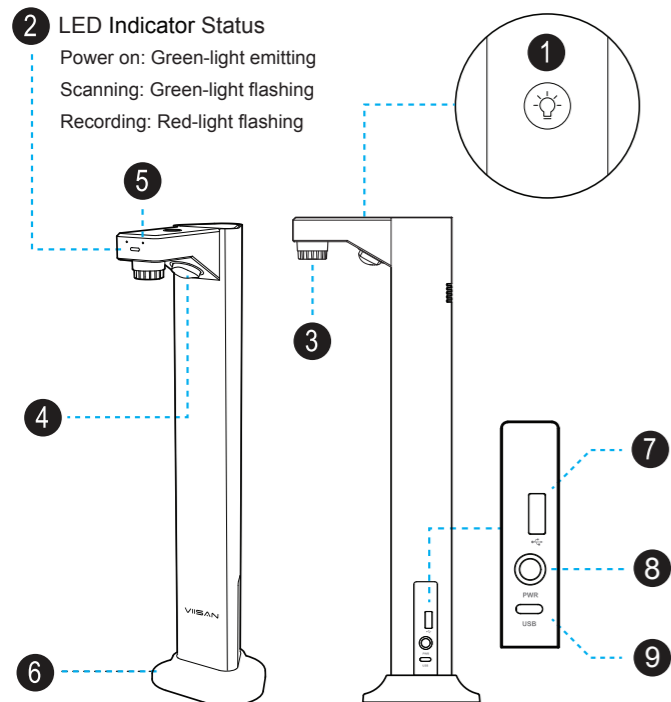
### Step 3. Unpacking

Before using, make sure the following items are included in the package. If anything is missing, contact the retailer where you purchased the product.

1. Document Camera
2. Scan pad
3. Quick Start Guide
4. USB Cable
5. External Shutter Button
6. External Foot Pedal  
(NOTE: The External Foot Pedal is only included in specific models.)
7. Power Adapter



### Step 4. Parts Descriptions

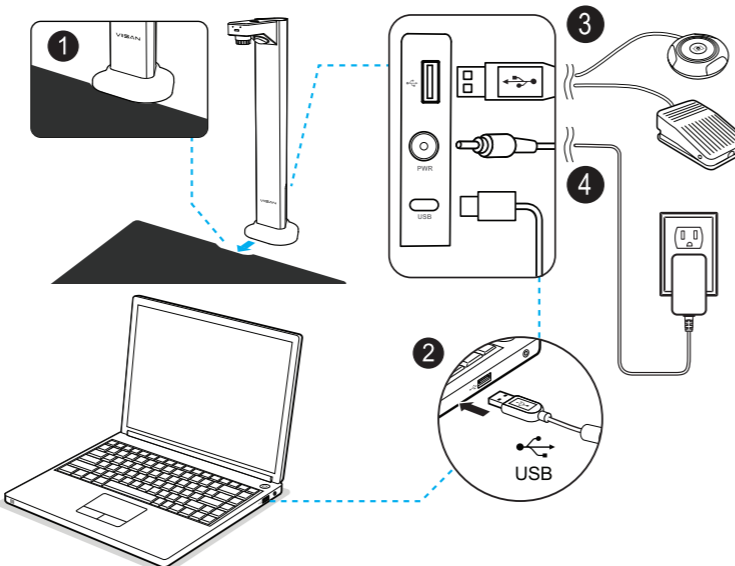


1. LED Touch Button
2. LED Indicator
3. Camera
4. LED Light
5. Microphone
6. Base
7. USB 2.0 Type-A Port (For USB Extension)
8. DC-IN Port (For Power Supply)
9. USB 2.0 Type-C Port (For PC Connection)

### Step 5. Getting Started

1. Place the document camera on the scanning pad and make sure it is in contact with the base of the document camera.
2. Connect one end of the supplied USB cable to the back of the document camera and the other end to an available USB port on your computer.
3. Connect the External "Shutter Button" or "Foot Pedal" to the USB hub on the back of the scanner.
4. Connect the supplied power adapter to the scanner's DC-IN port and plug the other end into a power outlet.

NOTE: After plugging in the document camera to your computer, ensure that your system's device manager has recognized the "Document Scanner" device.



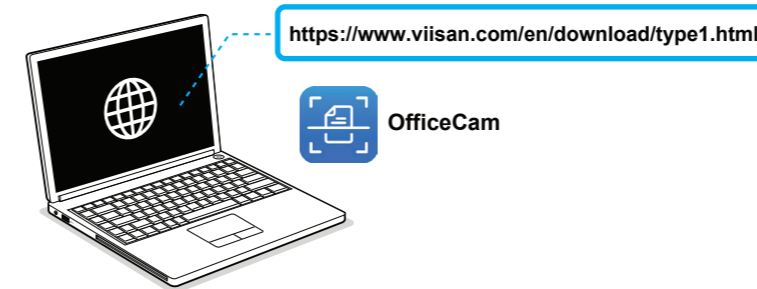
NOTE: The External Foot Pedal is only included in specific models.

### Step 6. Connect Setting

#### Using the compatible software

The document camera is equipped with a standard UVC Camera, allowing compatibility with third-party software that can recognize the camera's source. Nevertheless, to fully utilize the visualizer's features, we highly recommend utilizing our exclusive VIISAN OfficeCam software. You can conveniently download it for free from our website using the link provided below.

The VIISAN OfficeCam software offers advanced features, including the ability to take snapshots, recognize barcodes, and scan documents or books into JPEG or TIFF files. These files can then be converted into searchable PDF or editable Word, Excel, and Text formats using the software's embedded OCR engine.



To get more details about VIISAN OfficeCam, you can visit VIISAN official website to watch the instruction video or download the user guide via <https://www.viisan.com/en/download/type1.html>.



### Step 7. Warranty Information

Warranty Card	
Model No.: DL18 / DL24	
This product provides limited warranty continues for one (1) year from the date of purchase.	
Name:	Email:
Address:	
Product S/N:	
Reseller Info.:	
Date of purchase:	

#### Warranty Exclusions

- The following circumstances excluded from warranty coverage:
- Products damage caused by catastrophes, thunder stroke, faulty electric power, and environmental factors.
  - Defacing of product labeling(label alterations and falsifying, serial number missing, serial number no longer discernible, serial number invalid). All serial numbers are recorded and tracked for warranty purposes.
  - Unauthorized changes of non-parts, modifications or alterations, parts removal in or to the products.
  - Damage caused by operator error or operator fails to comply user manual instruction, such as, but not limited to improper storage resulting in product get wet, corrosion, ell off, squeezed or exposed to inadequate temperature/humid environment.
  - Accessories or packing material such as boxes, user manual, etc.